

## **Sweet Wing Ram Hoses – Ordering Information**

The following information is designed to ease the hassle of ordering your wing ram hoses when running a Sweet valve and ram.

Let's get started! You have mounted your new Sweet valve and ram and now you have choices to make. You could try to fit your existing hoses to the new unit or use the kit that came with the valve and ram set up – however both of these options are problematic and you're now reading this because nothing fits perfectly.

The next problem is that it is so confusing between talk about “negative 2” and “ORB adapters” that your mind is spinning out of control and suddenly you're actually thinking of spending time inside the house rather than in the shed!.....STOP – we are here to help.

By following these steps and taking note of which numbered option you need – you will end up with the MSCN part number that gives you exactly what you need. Fill out the order form on the back page and fax to **MSCN (02) 9838 7271**.

### **Step 1**

Mount valve and ram on the vehicle where it best suits the driver – not where you can stretch the old hoses to.

### **Step 2**

There are three types of plumbing options for a Sweet valve – these are typically a straight style of hose end. The valve and ram is tapped 3/8 UNF. This thread arrangement requires an O-ring to seal. No washers or thread tape are required.



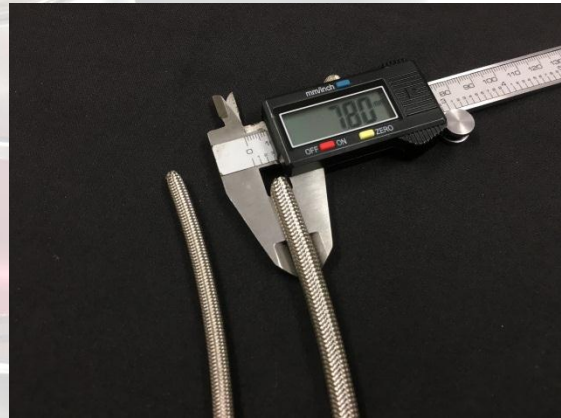
Select from the following options – the **number** (in green) you select will form a section of your MSCN part number for ordering purposes so write each one down.

- 1** AN hose ends (standard type)
- 2** All in one hose end (hose end and thread are one piece)  
MSCN preferred
- 3** Jiffy-Tite quick disconnect – MSCN preferred

**Step 3**

Decide the hose size you wish to use. The Sweet system can run all sizes from -2, -3 and -4. Refer to the sizing below of the outside hose diameters to assist in making your decision. Sweet recommends using -3 hose.

Hose Size	Black Cover O.D. (mm)	Black Cover O.D. (inch)	Plain Braided O.D. (mm)	Plain Braided O.D. (inch)
-2	5.90	0.232	Not available	Not available
-3	7.25	0.285	6.40	0.252
-4	9.32	0.366	7.80	0.307



Select from the following options – the **number** (in green) you select will form a section of your MSCN part number for ordering purposes.

- 4** dash -2
- 5** dash -3 MSCN preferred
- 6** dash -4



#### **Step 4**

You now need to decide what type of hose attachment you want at the wing ram. Keep in mind that keeping things as low profile as possible will prevent a lump of clay tearing it off in that feature you just made it into.

Select from the following options – the number you select will form a section of your MSCN part number for ordering purposes.

- 7** 90° AN hose ends (standard type)
- 8** BMRS swivel banjo all in one - MSCN preferred

#### **Step 5**

You now need to order your hose lengths. The hose outlet port closest to the valve lever is our “long hose” - running from the closest port to the handle (valve) to the top port on the wing ram. Make sure you have the ram the correct way round – the rod end should be facing upwards.



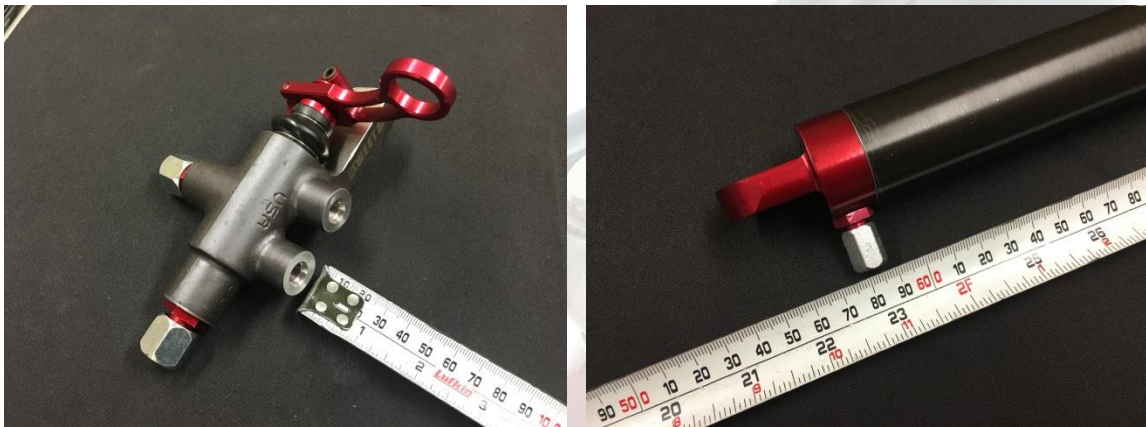
Select from the following options – the number you select will form a section of your MSCN part number for ordering purposes.

<b>9</b>	28"	<b>18</b>	32 ½"
<b>10</b>	28 ½"	<b>19</b>	33"
<b>11</b>	29"	<b>20</b>	33 ½"
<b>12</b>	29 ½"	<b>21</b>	34"
<b>13</b>	30"	<b>22</b>	34 ½"
<b>14</b>	30 ½"	<b>23</b>	35"
<b>15</b>	31"	<b>24</b>	35 ½"
<b>16</b>	31 ½"	<b>25</b>	36"
<b>17</b>	32"	<b>26</b>	custom

**MSCN Tech Tip:** Use a piece of hose to get this measurement – a tape measure does not give a nice enough bend. We've come this far – let's get it right!

**Step 6**

This is for the shorter hose. This hose is measured from the thread face to the centre of the fitting hole in the wing ram.



Select from the following options – the number you select will form a section of your MSCN part number for ordering purposes.

<b>27</b>	17"	<b>36</b>	21 ½"
<b>28</b>	17 ½"	<b>37</b>	22"
<b>29</b>	18"	<b>38</b>	22 ½"
<b>30</b>	18 ½"	<b>39</b>	23"
<b>31</b>	19"	<b>40</b>	23 ½"
<b>32</b>	19 ½"	<b>41</b>	24"
<b>33</b>	20"	<b>42</b>	24 ½"
<b>34</b>	20 ½"	<b>43</b>	25"
<b>35</b>	21"	<b>44</b>	custom

**MSCN Tech Tip:** Again use a piece of hose to get this measurement – a tape measure does not give a nice enough bend.

**Step 7**

By writing down the number that suits your application in Steps 2 to 6 you should now have the MSCN part number that you will need to quote when ordering. Each part number begins with "Sweet W/R".

You should have a number that ends up something like this:  
**Sweet W/R-2-5-8-14-32** (Example part number for a Maxim tall cage car)

Please note: If you selected Jiffy-Tite in Step 2 we will automatically shorten your hose to compensate for their fitting lengths. All we need from you is the length from the flat face of the valve to the centre of the port in the ram.

**Please note this kit will not interchange with KSE or other kits.**

Call us on (02) 9838 7272 to order, fax this page to (02) 9838 7271 or come and visit us in the shop at Unit 15, 4a Foundry Road Seven Hills, NSW 2147.



Check out our You Tube page for more MSCN Tech Tips – Sweet Wing Ram Plumbing



Check out our Facebook page Motorsport Connections Australia



Check out our website at [www.mscn.com.au](http://www.mscn.com.au)

---

**ORDER FORM:** Fill in the numbers from Steps 2 to 6. Fax to (02) 9838 7271 and we will call you to confirm your order, delivery and payment.

Sweet W/R  —  —  —  —

NAME: \_\_\_\_\_

ADDRESS: \_\_\_\_\_

MOBILE: \_\_\_\_\_

EMAIL: \_\_\_\_\_

